

Search Thingiverse

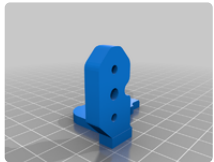
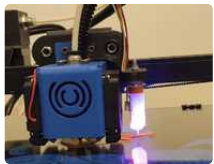
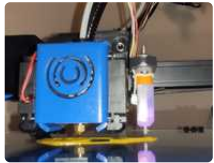
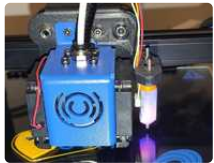
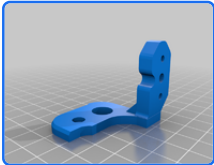
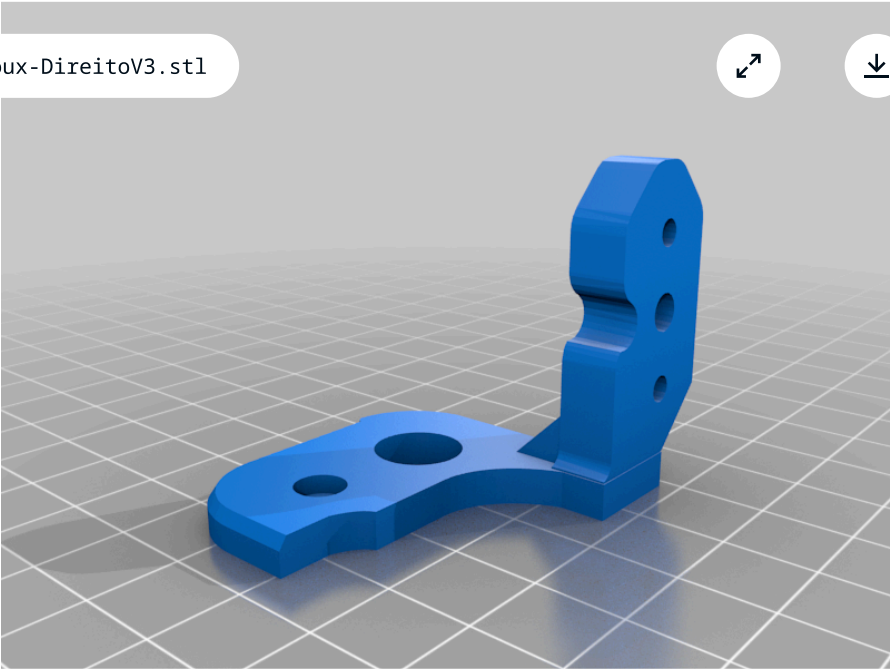


TwoTrees Bluer 3dTouch Mount

cidrjbr October 01, 2020 0 31 2

Download all files

Bluer3DToux-DireitoV3.stl



Thing details

Files 2

Makes 0

Remixes 2

Apps 4

Summary

This mount is supposed to use in a TwoTrees Bluer.  
All the distances are measured for this printer.  
Happy printing ;)

Print Settings

- Printer:  
TwoTrees BLUER
- Rafts:  
No
- Supports:  
No
- Resolution:  
0.28
- Infill:  
25-40%
- Filament brand:  
Default came with printer
- Filament material:  
PETG or ABS
- Notes:  
This mount is supposed to use in a TwoTrees Bluer.

All the distances are measured for this printer.  
Distance from tip of the nozzle and tip of the probe is 40 mm  
I have to make some adjustments on this model, resizing the height of the probe 1 mm, to get more clearance between the tip of the probe and the Bed.  
On marlin firmware, put this line or edit.

```
"#define Z_MIN_PROBE_ENDSTOP_INVERTING false"  
  
"#define Z_MIN_PROBE_USES_Z_MIN_ENDSTOP_PIN"  
  
"#define BLTOUCH"  
  
"#define Z_SAFE_HOMING"  
  
"#define AUTO_BED_LEVELING_BILINEAR"  
  
"#define NOZZLE_TO_PROBE_OFFSET { 40, -0.7, 0 } For the right version.  
  
"#define NOZZLE_TO_PROBE_OFFSET { -40, -0.7, 0 } For the left version.  
  
"#define GRID_MAX_POINTS_X 4"  
  
"#define LCD_BED_LEVELING"
```

Happy printing ;)

Telegram group: <https://t.me/twotreesbluerbr> (Bluer's owners group from Brazil. Yes we spoke english too!!!)



License

CC BY-SA 

[TwoTrees Bluer 3dTouch Mount](#)  
by [cidrjbr](#) is licensed under the [Creative Commons - Attribution - Share Alike](#) license.

